

# Fertility in Western Europe: the role of religion

Nitzan Peri-Rotem | May 23, 2016



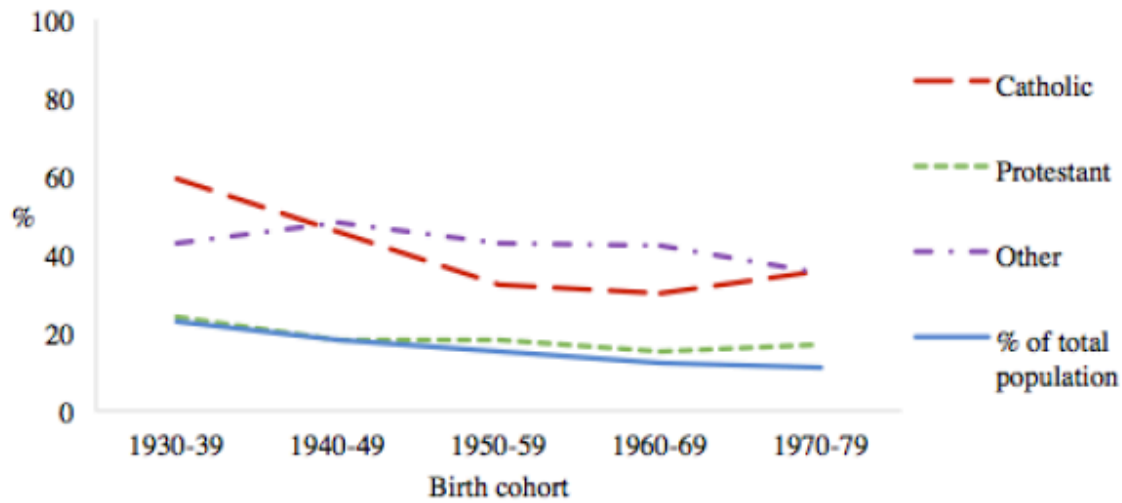
The religious landscape in Western Europe is characterised by contrasting trends; while attendance rates at religious services have declined dramatically, over half of the population in this region still identify themselves as affiliated with a particular religion (Voas 2009).

What is the relevance of religion to individual behaviour in these so-called secularised countries? More specifically, does religion still matter for fertility behaviour in Western Europe? Has this relationship changed over time, and how? In order to examine these questions I use data from Britain, France and the Netherlands<sup>1</sup>, as these countries have experienced a particularly sharp decline in religious practice as well as in other measures of religiosity over the past decades (Greeley 2003). In this study, I analyse fertility trends across cohorts of women, focusing on the main Christian denominations in each country. Based on this analysis, I argue that religion is still an important factor in explaining fertility differences in Western Europe and, in some cases, fertility discrepancies by religious practice have become more pronounced<sup>2</sup>. However, the intensity of this relationship varies according to the cultural context and religious structure in each country (Peri-Rotem 2016).

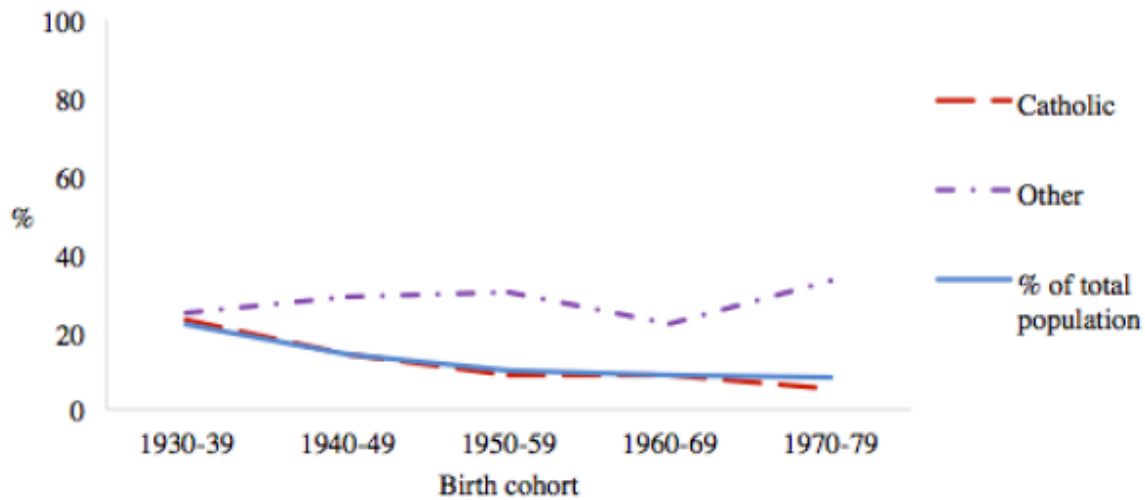
## **Trends in religious involvement in Western Europe**

**Fig. 1:** Proportion attending religious services at least once a month by denomination and birth cohort with country-specific population weights. **a** Britain, **b** France, **c** Netherlands

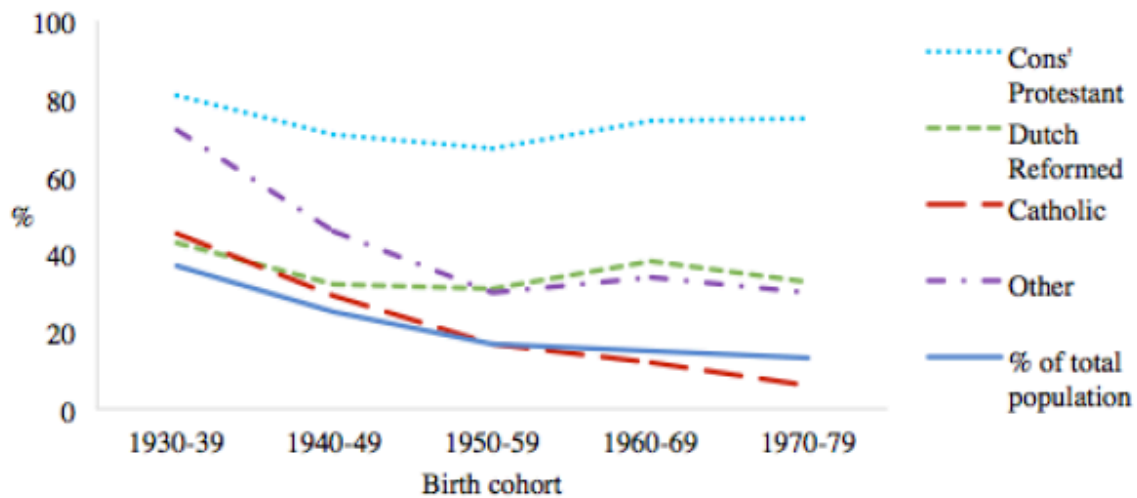
**a. Britain**



**b. France**



**c. Netherlands**



Cons' Protestant = Conservative Protestant (Evangelicals and Orthodox Calvinists)

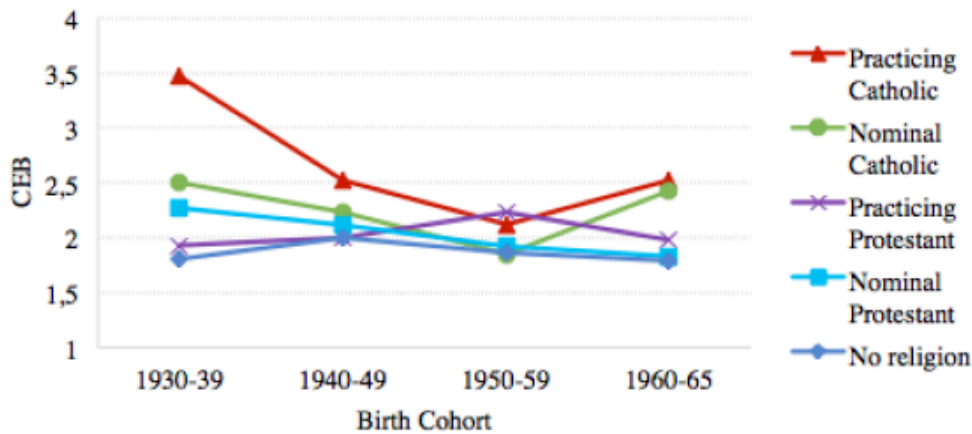
In Western Europe, as in other regions, people from recent birth cohorts are less religious than those born earlier, in terms of both religious affiliation and practice<sup>3</sup>. Nevertheless, the decline in religious service attendance appears to have slowed down among more recent cohorts (Fig. 1). Furthermore, the majority of the adult population in these countries still identify themselves as Christians.[4] In consequence, three levels of religious adherence can be identified, with unaffiliated individuals at one end of the religiosity scale, and actively religious people, who attend religious services at least once a month, at the other. In between, are nominally religious people, who identify with a particular religion but do not attend religious services on a regular basis. These people, who have been described as “neither obviously religious nor entirely secular” (Voas 2009: 165) comprise the largest group.

The importance of family and children is a common feature of Christian teachings, as in other major religions. According to Norris and Inglehart (2004: 23): “one of the most central injunctions of virtually all traditional religions is to strengthen the family, to encourage people to have children, to encourage women to stay home and raise children, and to forbid abortion, divorce, or anything that interferes with high rates of reproduction”. Since practicing religious women are more likely to comply with religious doctrines about the centrality of family and children, they are expected to have the highest number of children. On the other hand, religiously unaffiliated women, who have the weakest attachment to religious tradition, are expected to have the lowest fertility. In addition, practicing religious people form an increasingly selective group of individuals with strong adherence to religious tradition. Therefore, women in this group are expected to maintain high fertility levels, or experience a more moderate decline in fertility compared to other women, leading to increasing fertility differences between practicing and non-practicing women in recent cohorts.

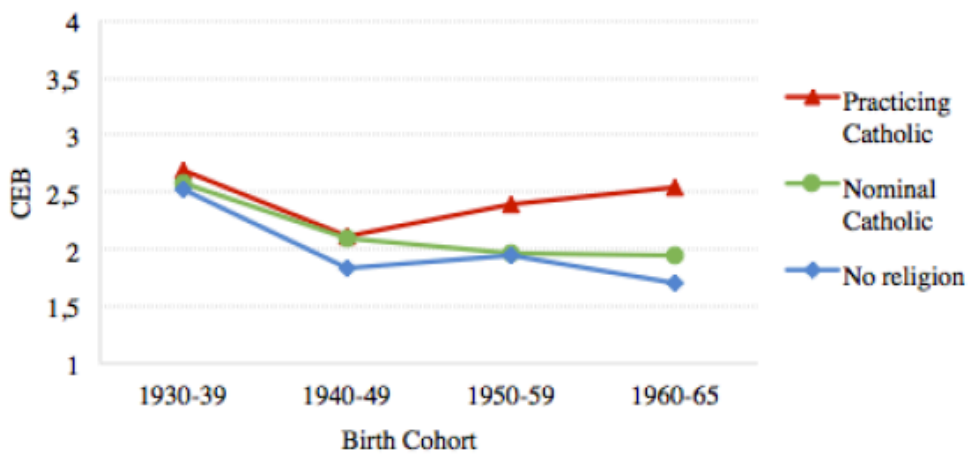
### **Religion and fertility across birth cohorts: A growing divide?**

**Fig. 2: Children ever born by women's birth cohort and religious group (descriptive data using country-specific weights). a. Britain, b. France, c. Netherlands**

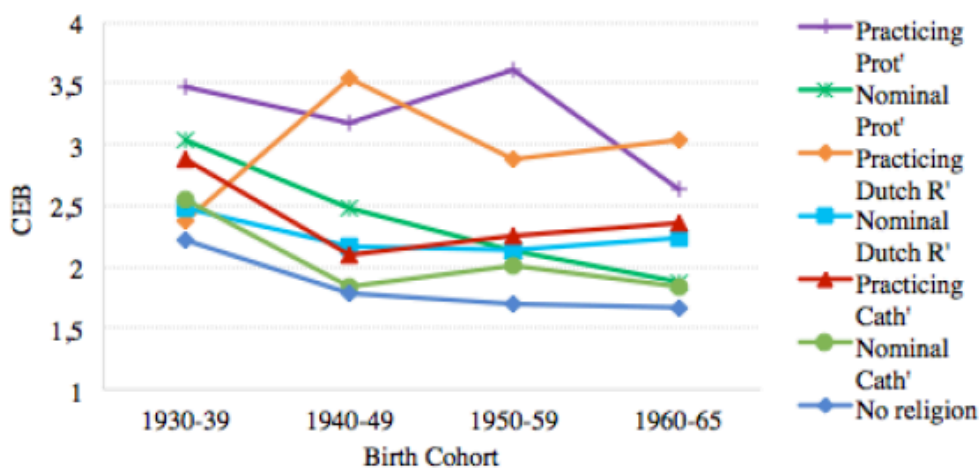
**a. Britain**



**b. France**



**c. Netherlands**



*Note: Regular attenders within each group are classified as "Practicing" (at least once a month) and non-regular attenders (less than once a month) are classified as "Nominal". In the Netherlands, Protestants (Prot') include Calvinist and Evangelist denominations. Cath=Catholics. Dutch R'=Dutch Reformed.*  
*Source: Peri-Rotem 2016*

Figure 2 presents the trend in the number of children ever born to women by birth cohort and by the main religious groups in each country. While there are differences across countries in the relationship between religion and completed fertility, practicing religious women tend to have more children compared to nominally religious women. In addition, in all three countries,

women who report having no religion consistently have the lowest fertility.

In terms of trends across cohorts, most groups of nominally religious women experienced a substantial decline in completed fertility, to levels that are more similar to those of women with no religion. The fertility of practicing Catholic women in Britain also declined sharply, although they show signs of recovery in the most recent cohort of women born in 1960-65. In France on the other hand, there is a growing fertility gap between practicing Catholic and all other non-practicing women, since the fertility of the former increased in recent cohorts (following an initial decline). A similar divergence is also found between practicing and nominal Protestant women in the Netherlands (including Dutch Reformed and other Protestants). Thus, there is an increasing divide in completed fertility between practicing religious women and those with a weaker orientation to religion, although, this pattern is less pronounced for Britain.

## Religious differences in the transition to first birth

**Table 1: Median age at first birth, proportion childless and first births outside marriage by religious group for women aged 15-45. Britain, France, and the Netherlands, by birth cohort**

Religious Group	Pre-1960 Cohorts				Post-1960 Cohorts			
	Median age at first birth	% Childless at age 45	% births outside marriage	N women	Median age at first birth	% Childless at age 45	% births outside marriage	N women
<b>a. Britain</b>								
No Religion	25	13	11	562	27	15	52	1,246
Nominal Catholic	25	10	17	116	27	11	47	131
Practicing Catholic	26	14	1	93	29	3	37	66
Nominal Protestant	25	12	8	898	28	12	33	517
Practicing Protestant	27	13	5	301	29	6	21	101
<b>Total</b>	<b>25</b>	<b>12</b>	<b>8</b>	<b>1,970</b>	<b>27</b>	<b>13</b>	<b>43</b>	<b>2,061</b>
<b>b. France</b>								
No Religion	24	15	26	137	27	20	63	387
Nominal Catholic	25	13	16	1,934	28	14	43	1,826
Practicing Catholic	26	17	13	449	27	3	33	161
<b>Total</b>	<b>25</b>	<b>14</b>	<b>16</b>	<b>2,520</b>	<b>28</b>	<b>14</b>	<b>45</b>	<b>2,374</b>
<b>c. Netherlands</b>								
No Religion	28	19	6	411	31	23	22	662
Nominal Catholic	27	14	2	252	30	14	13	364
Practicing Catholic	28	22	1	141	29	13	9	45
Nominal Protestant	27	17	2	35	30	18	12	33
Practicing Protestant	25	10	4	116	27	12	2	112
Nominal Dutch R'	27	18	1	123	29	7	9	84
Practicing Dutch R'	25	20	0	86	29	9	4	53
<b>Total</b>	<b>27</b>	<b>17</b>	<b>3</b>	<b>1,164</b>	<b>30</b>	<b>18</b>	<b>15</b>	<b>1,353</b>

Source: Peri-Rotem 2016

The differences in completed fertility among religious groups may also reflect variation in the

timing of first birth and the proportion of women who remain childless in each group. Table 1 summarizes the main findings from the reconstructed birth histories of women born before and after 1960 by religious group, including the median age at first birth, the proportion of women remaining childless at age 45 and the proportion of births outside marriage. It shows that the median age at first birth has increased for all women born after 1960, compared to women born earlier, although there is no systematic trend in religious differences in the age at first birth. On the other hand, in all three countries there has been a decline in the proportion of childless women among those who are actively religious, while the proportion in the no religion group has increased. Thus, the differences in the proportion of childless women by level of religiosity have become more marked among recent cohorts. In addition, the proportion of women who had their first birth outside marriage has increased substantially for all women, although the largest increase was among non-affiliated women.

To summarise, practicing religious women consistently display more traditional family behaviours compared to non-practicing ones, including higher fertility levels and lower rates of childlessness and births outside marriage. Furthermore, these differences have become more pronounced among recent cohorts. This trend is partly attributed to the increasing selectivity of practicing religious women, as only the most devout tend to continue attending church regularly. However, this trend may also vary by the particular cultural and religious heritage in each country. For example, the strict separation between church and state in France and the Netherlands, may have further contributed to the divide between practicing and non-practicing individuals, at least in terms of fertility behaviour.

## References

Greeley, A. M. (2003). *Religion in Europe at the end of the second millennium: A sociological profile*. New Brunswick, N.J.: Transaction Publishers.

Norris, P. and Inglehart, R. (2004). *Sacred and secular: Religion and politics worldwide*. Cambridge: Cambridge University Press.

Peri-Rotem, N. (2016). Religion and Fertility in Western Europe: Trends across Cohorts in Britain, France and the Netherlands. *European Journal of Population*. DOI 10.1007/s10680-015-9371-z.

Voas, D. (2009). The rise and fall of fuzzy fidelity in Europe. *European Sociological Review*, 25(2), 155-168.

<sup>1</sup>Data for Britain are derived from the British Household Panel Survey (BHPS 2008, excluding data from Northern Ireland). Data from the Generation and Gender Programme (GGP) are used for France (2005) and the Netherlands (2002-2004).

<sup>2</sup>In all three countries, religious practice is measured by frequency of attendance at religious services. Practicing religious people are those who attend services at least once a month, while the “nominally religious” or non-practicing attend services less often or not at all.

<sup>3</sup>According to previous studies (e.g. Voas 2009), the decline in religion across cohorts reflects a generational change rather than an ageing effect (i.e., older people are more religious because they were born at an earlier period in time, rather than due to an increase in religiosity with age). This trend refers to the population as a whole, regardless of religious affiliation.

[4] 52% in Britain, 82% in France and 51% in the Netherlands (author's calculations based on latest available religious data from the BHPS (2008), The French GGP (2005) and the Dutch GGP (2002-2004)).