

# Lower world population growth? A matter of culture

Vegard Skirbekk, Marcin Stonawski, Guido Alfani | April 4, 2016



The demographic transition, i.e., the passage from the ancient to the modern demographic regime of low fertility and low mortality, can be a highly heterogeneous process, and its impact on population growth can differ widely.

In Europe and Northern America (EU&NA)<sup>1</sup>, for instance, the demographic transition, which took place approximately from the early 19th to the end of the 20th century, caused the population to increase by a factor of less than five, which is very low compared to the growth now observed in most other regions of the world.

## **How national traits shaped regional variations in the demographic transition**

In a recent study (Skirbekk et al. 2015), we contend that the main reason for this relatively low increase is a set of cultural traits which led to the adoption of the European marriage pattern (Hajnal 1965) characterized by late marriage, significant shares not marrying and low levels of extramarital fertility. This resulted in the comparatively low fertility that prevailed even before the onset of the demographic transition, and, perhaps most importantly, in a greater ability to reduce fertility at a later stage, when mortality started to decline.

From 1820 to 2010, the population of EU&NA increased 4.6-fold to 1.079 billion, while the population of Asia increased slightly more, from 720 million to almost 4.170 billion people (Table 1). The biggest change from 1820 to 2010 was observed in regions that had relatively small populations in 1820: Latin America (which increased 38-fold, to almost 600 million) and Africa (which increased 14-fold to 1.044 billion).

## **Counterfactuals: what if the EU&NA trajectories had been adopted worldwide?**

Table 1 and Figures 1 to 4 show how population size would have changed in these regions under two alternative scenarios. In the “EU&NA scenario”, all regions would have grown by a

factor of 4.6 during the demographic transition between 1820 and 2010. In this case, Asia would have reached only 3.3 billion people, Africa 341 million, and Latin America 72 million. Under the “French scenario”, the global population would have merely doubled over the same period. All regions would now have significantly fewer inhabitants: Europe and North America would have increased to 474 million and Asia to 1.5 billion, while Africa would have grown to 150 million, which is just 15% of its current population.

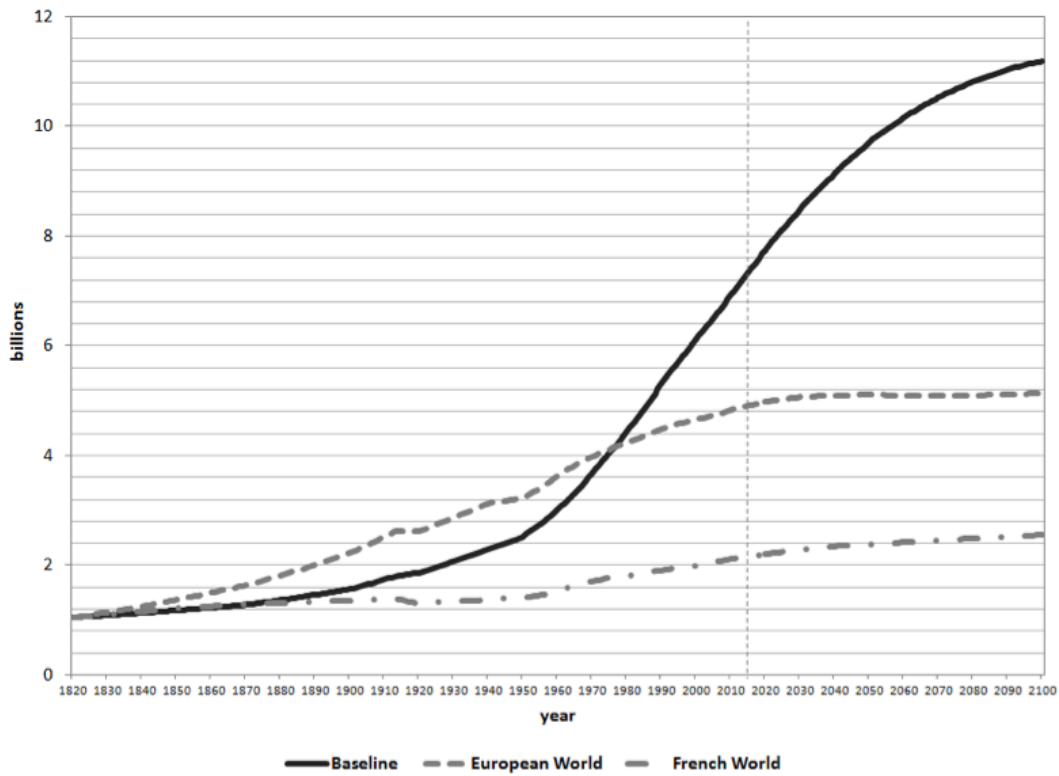
**Table 1. Population by world region, year and scenario (European/French reflect what the world would have been if the populations had followed these trajectories) [in thousands].**

Scenario	Year	<i>EU&amp;NA</i>	<i>Asia</i>	<i>Africa</i>	<i>Latin America</i>	<i>Australia &amp; New Zealand</i>	<i>World</i>
	1820	234,457	717,890	74,236	15,695	434	1,042,713
<b>Baseline(*)</b>	2010	1,079,524	4,169,860	1,044,107	599,823	26,532	6,929,725
	2100	1,145,721	4,888,653	4,386,591	721,224	48,483	11,213,317
<i>EU&amp;NA</i>	<i>2010</i>	<i>1,079,524</i>	<i>3,305,423</i>	<i>341,809</i>	<i>72,265</i>	<i>1,998</i>	<i>4,801,024</i>
	<i>2100</i>	<i>1,145,721</i>	<i>3,508,113</i>	<i>362,769</i>	<i>76,697</i>	<i>2,121</i>	<i>5,095,426</i>
French	2010	474,398	1,452,570	150,208	31,758	878	2,109,813
	2100	593,152	1,816,186	187,809	39,708	1098	2,637,953

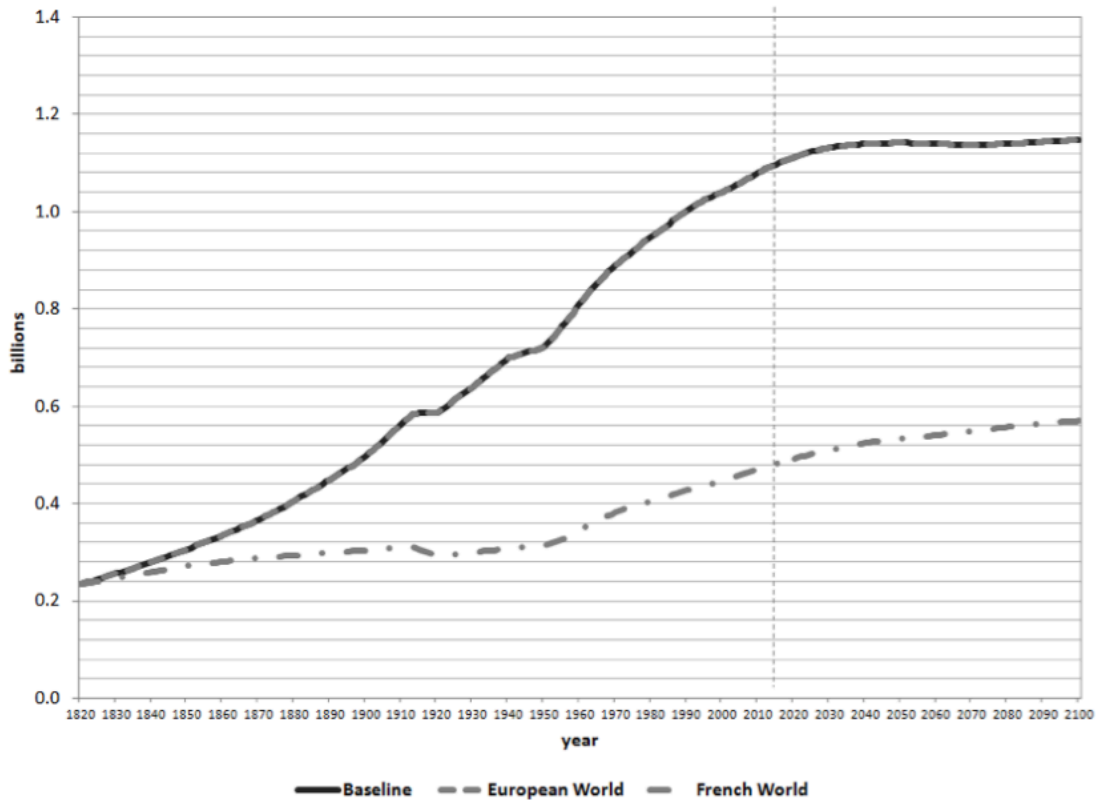
EU&NA=Europe and Northern America \* =Observed development and UNPD projections

Note: the baseline scenario is based on the medium scenario of the UN projections from the 2015 Revision of World Population Prospects. This is an updated version of a recently published study (Skirbekk et al. 2015), which was based on data from UN projections from 2013.

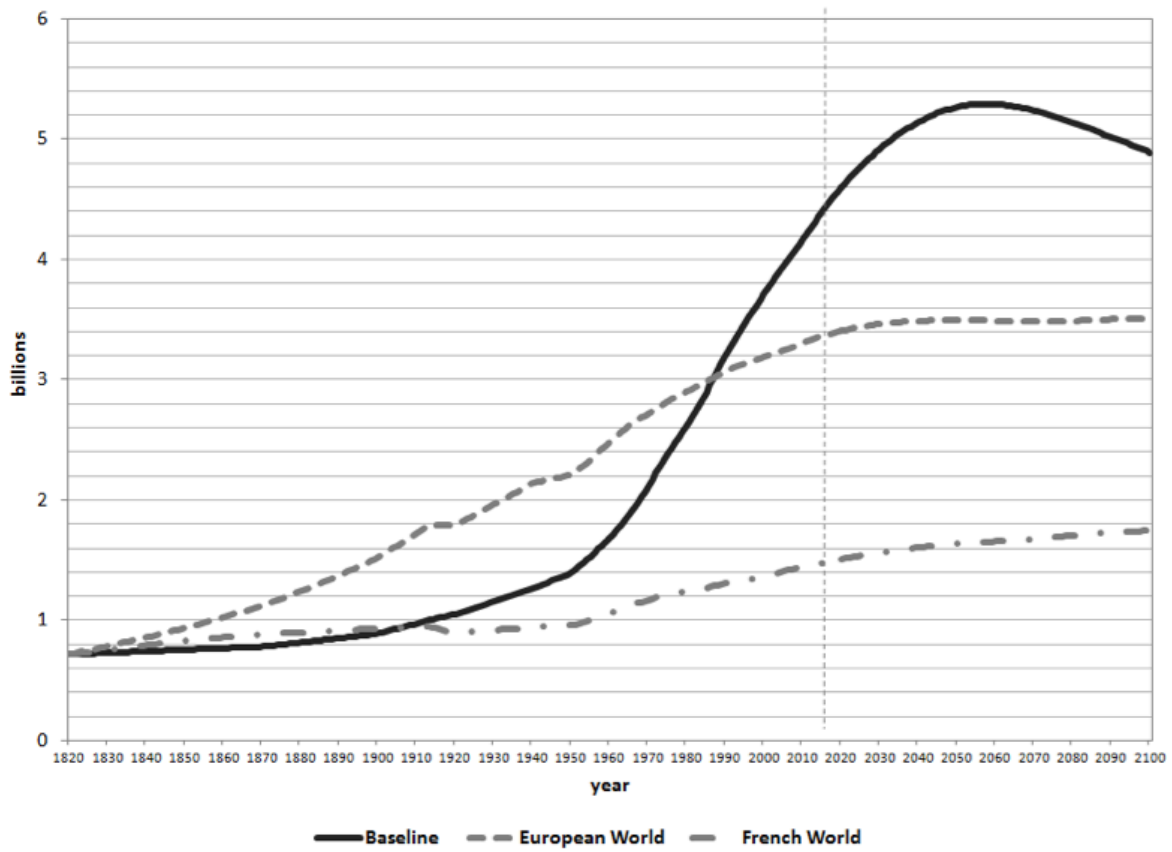
**Figure 1.** Global population size 1820-2100. Actual and counterfactual population trajectories under the “European” or “French” world scenarios.



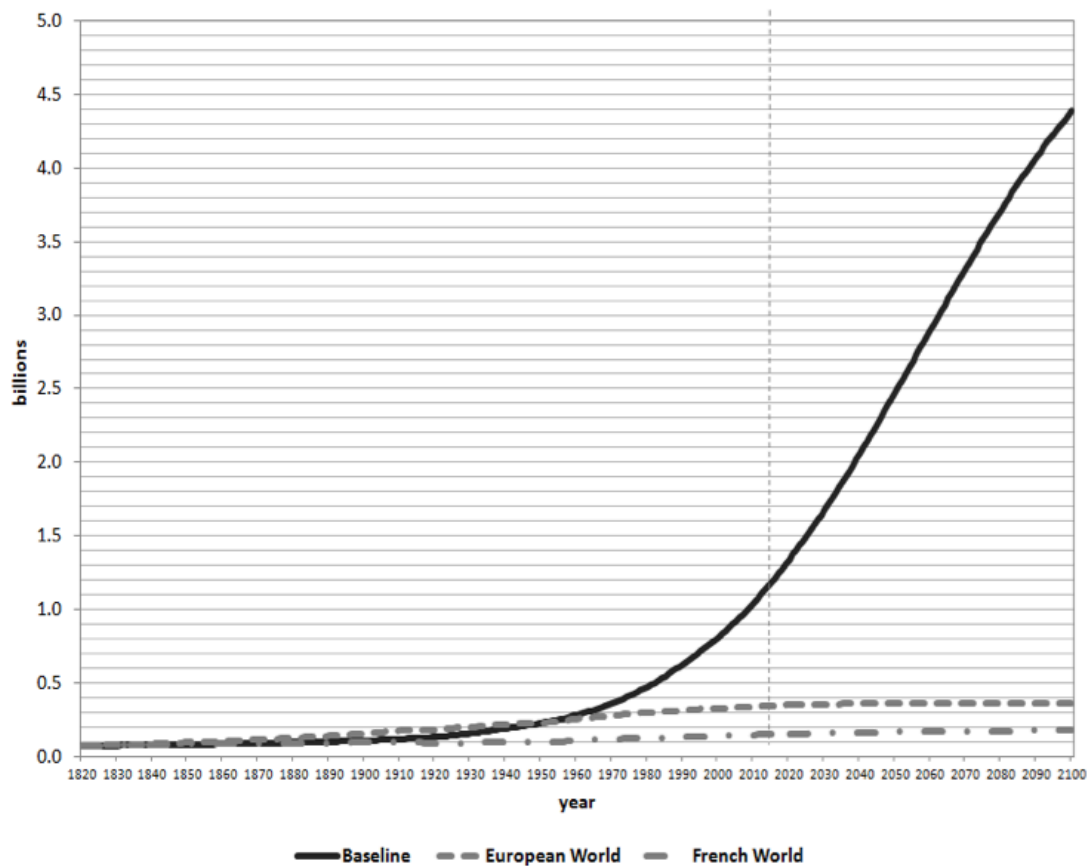
**Figure 2.** European & North American population size 1820-2100. Actual and counterfactual population trajectories under the “French world” scenario.



**Figure 3.** Asian population size 1820-2100. Actual and counterfactual population trajectories under the “European world” or “French world” scenarios.



**Figure 4.** African population size 1820-2100. Actual and counterfactual population trajectories under the “European world” or “French world” scenarios.



The implications of differences in population growth patterns are large. While the medium variant of the 2015 Revision of the UN projections suggests that the population of Nigeria might reach 752 million by 2100, under the French population trajectory, its population would have grown from 38 million in 1950 to just 72 million in 2100. If Brazil had followed the EU&NA population growth trajectory it would have grown from 5 million in 1820 to 22 million by 2100, rather than to a projected 200 million, and if India had done so, it would have grown from 209 million to 529 million rather than to the 1.7 billion expected by 2100.

### **The role of regional and cultural characteristics (is larger than you think)**

Had the rest of the world population experienced European growth rates, the consequences in terms of global and regional population growth (but also, very likely, socio-economic growth and environmental impact) would have been far-reaching. Take greenhouse emission levels, for instance: all other things being equal, in our “EU&NA scenario” (world population of 4.8 billion rather than 6.9 billion in 2010) total emissions would have been about 19% lower than was actually the case, and 65% lower in the “French scenario” (2.1 billion people).

A key assumption that we make is that many of the changes related to the timing of the demographic transition in Europe could also have taken place in other world regions at a similar time. This is not implausible. The sustained decline in family size towards replacement levels that took place in Europe could also have originated independently elsewhere, leading

to similar population trajectories.

This is consistent with Goody's (2006) opinion that differences in household structures across the wider Eurasian area have been overstated. Regarding education, it is true that education levels in European countries rose at a relatively early stage, and that the levels observed in the early 19th century in, say, Germany, England and France were still not matched in many countries across the world by turn of the 21st century. Yet education levels could, in principle, also have increased elsewhere at earlier points in time, e.g., the role of scholarship has long been emphasized in very different cultures around the world.

But what really made a difference to the European population growth patterns was the culturally-driven marriage pattern, which obliged considerable proportions of the population to refrain from sex and reproduction during much of their reproductive life. In northwestern Europe, for example, a large proportion of 15-24 year olds - ranging between 30 and 55% - were servants, and they postponed marriage until they were in an economic position to afford family formation, which contributed to late and low fertility.

In sum, as the study by Skirbekk et al. (2015) underlines in greater detail than we can explore here, the global and regional population growth effects of specific cultural characteristics can be very large, if these characteristics affect family formation, childbearing, and extramarital sex. Western cultural practices and responses could have, at least to some extent, been replicated elsewhere; if they had, the world would be a very different place today.

## **footnote**

<sup>1</sup>In a broad sense, Northern America can be considered an "overseas offshoot" of Europe, from which it was in large part populated. In this article, for the sake of simplicity, we will refer to this broad area as a unique region, which we will call EU&NA (Europe and Northern America).

## **References**

Goody J., 2006. *The theft of history*. Cambridge University Press

Hajnal J., 1965. *European marriage pattern in historical perspective*. Population and History. Arnold: D.V. Glass and D.E.C. Eversley, London.

Skirbekk, V, M Stonawski, G Alfani. 2015. [Consequences of a universal European demographic transition on regional and global population distributions](#). *Technological Forecasting and Social Change*, vol 98: 271-289.

[www.sciencedirect.com](http://www.sciencedirect.com)